

IMPEC®

- improving process efficiency

News letter No 01 / 2016 Impec AS

NEWS

www.impec.no



IMPEC AS will be present as an exhibitor at the 20th Arab International Aluminium Conference (ARABAL) in Dubai, 22-24th of November 2016.

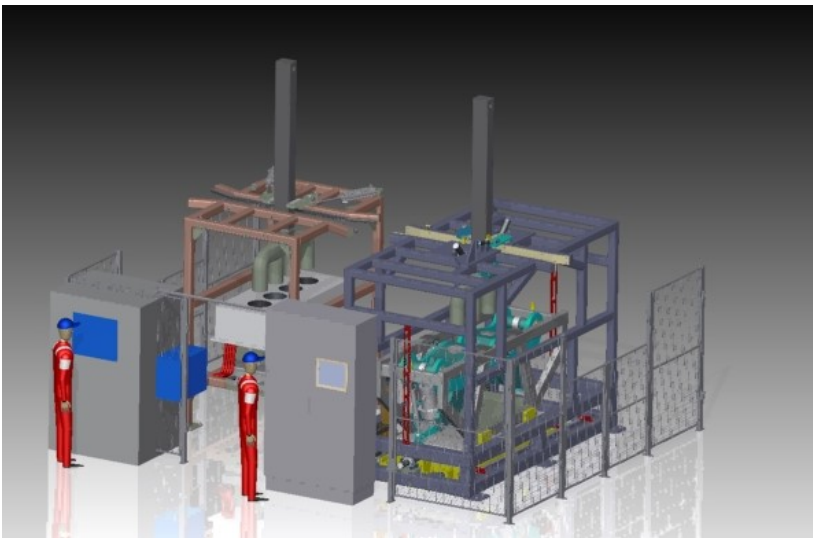
IMPEC will together with Sunpower have a table top exhibition at stand D10A in the conference venue.

Ståle Øvstetun will be there to welcome you.

We will also be present at the Aluminium 2016 Messe Düsseldorf between the 29th of Nov until the 1st of December.

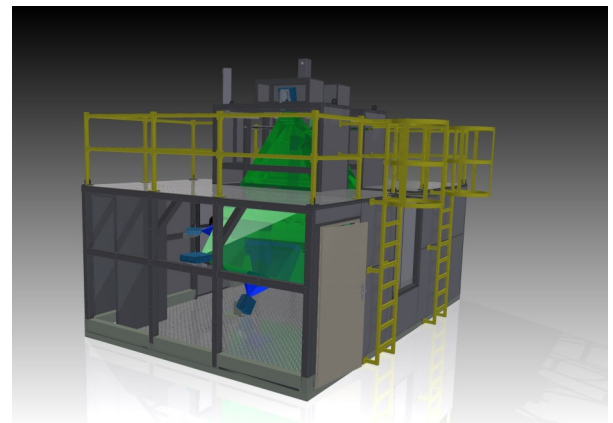


Impec Stub Inspection System & Stub Straightener for EGA Emal PH2



IMPEC`s patented stub straightening machine to be delivered to Emal Ph-2. This is the only kind of machine in the market that applies ZERO force on the yoke during the straightening process and hence the entire force generated for straightening is used precisely for that purpose—to straighten the stub, ensuring excellent performance day in and day out. The upstream Stub Inspection System with 3D cameras will measure toe-in and check for other defects before deciding if the stubs will be sent to the repair loop. Installation will be delivered Q1—2017.

Impec has also delivered a **3D Butt inspection system for EGA Dubai**. This system is creating a detailed 3D model of the butts including the yoke and information is transferred to the process control department for further use in pot room process optimization. This has been in operation since Q4-2015 and is the first of its kind of 3D butt analyzing system installed worldwide.



3D Stub & Butt Inspection systems with Stub Straightening System to be delivered for KTP Hydro Karmøy.

IMPEC has been selected to deliver a vision system, including induction heaters and a stub straightening machine for the Hydro Aluminium KTP project. These systems will be delivered Q2-2017.

Anode Jacking Frames for KTP Hydro Karmøy.

Impec was awarded contracts for two automated anode jacking frames for the KTP Hydro Karmøy project, which will be delivered Q3—2017

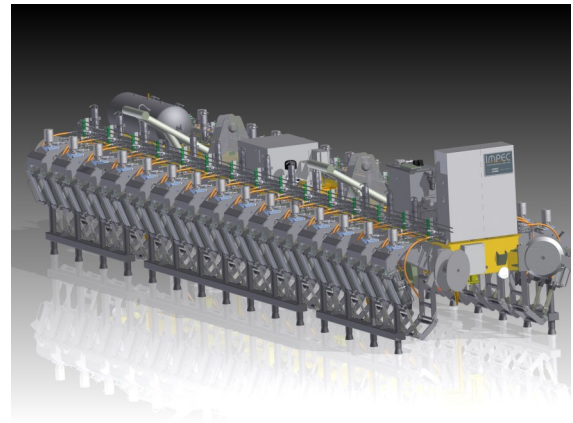
Anode Jacking Frame for TRIMET Aluminium SE, Hamburg.

Impec has delivered an automated anode jacking frame to Trimet in Hamburg Q3-2016.

Impec Pot Covers:

Design of pot covers are often as installed with poor performance. IMPEC has redesigned the pot covers for several old pot lines based on our experience keeping new design interchangeable with old and have experience with both manual handled and PTM operated hoods. Our designs have resulted in improved pot sealing, lower costs, improved strength and reduced weight compared to original design. Contact us for a review of your design to optimize performance and reduce your cost

- References:
Hydro Aluminium—Årdal, Høyanger, Sunndal, Karmøy AP-18—Norway.
- Hydro Aluminium—Neuss-Germany.
- Alcoa—Mosjøen-Norway.
- Kubal—Sweden.
- Nordural—Iceland.
- Qatalum—Qatar.



3D Stub Inspection System for Alcoa Fjardal.

Impec has installed a new 3D stub inspection system at Alcoa Fjardal smelter with 360° reading. This system reads all vital information such as stub diameter, stub length, toe-in, yoke dimensions, stem perpendicularity to yoke and bi-metallic clad crack inspection. This was delivered Q3-2016.

